

Most men and women in Southend do now not “browse the cyber web” in one tidy sitting. They cost a mobilephone although running, they open a domain in between trains, they seek for a bunch even though they may be status outdoors a store. That conventional behaviour is exactly why mobile-first information superhighway layout is simply not a preferred label for marketing other folks, it is just superb apply.

When your site works easily on a small monitor, it enables customers act instant. It additionally reduces the friction that quietly leaks leads, orders, and bookings. Mobile-first design is the big difference among a visitor pondering, “This appears worthwhile,” and them wondering, “I’ll search once again.”

Southend actuality: the smartphone is the entrance door

Southend-on-Sea is the form of area where friends transfer around. Locals come out for a fast errand. Tourists wander among points of interest and desire instantaneous solutions. Even in the event that your enterprise is absolutely not straight in tourism, the behaviour styles train up everywhere: a parent in quest of a dentist, a house owner evaluating trades, somebody looking for beginning hours formerly they decide to using.

If your website online rather a lot slowly, the client feels it proper away. If the textual content is simply too small or buttons are awkward, they can not restore it with determination. They without a doubt go away.

Mobile-first layout skill you give up designing for a broad laptop canvas first, then squeeze it down. Instead, you delivery with the experience your clientele honestly use, then build upward. The result is by and large more easy, clearer, and more uncomplicated to navigate.

And sure, “easier” does no longer imply “normal.” It traditionally capability fewer distractions, greater deliberate format, and higher choices approximately what subjects such a lot to human being on a smartphone.

Performance is design, no longer just “technical stuff”

Mobile-first does no longer simply mean responsive layouts that shrink smartly. It also potential functionality, because on telephones the restrictions are truly. People perhaps on patchy sign close the seafront, or they possibly out and approximately on a capped data plan. Even whilst the sign is best, there may be the primary truth of a machine that is not contemporary.

From experience, the fastest method to spot a drawback website is to look at what occurs whilst you open it on a cellphone connection and try to get to the thing you got here for. A ideally suited-looking homepage can nevertheless fail if the page retains leaping, if photos take ceaselessly to occur, or if the menus are clunky.

A cellular-first strategy most often forces you to handle efficiency early, considering cellular users demonstrate topics sooner. You go with the true image sizes, you evade heavy scripts that do not earn their avoid, and also you layout with truly loading behaviour in intellect. That is wherein conversions reside.

If you want a sensible benchmark, objective for “quickly sufficient that nobody gets pissed off.” In concrete terms, that occasionally manner preserving web page weight wise and making sure key content material seems to be quickly. Exact aims vary depending on your stack and content variety, however the route is steady: make the most content material load early, maintain the interplay responsive, and circumvent losing the person’s time on ingredients they do now not desire.

Navigation: thumbs, now not mice

On mobile, navigation will not be a count of "can they find it," it can be "can they find it without problems with a thumb at the same time they may be possibly going for walks, cooking, or distracted."

Good cellphone-first layout treats the thumb as a design constraint. Buttons and tap objectives desire space. Menus desire to be reachable with minimum steps. Important movements like "Call now," "Get a quote," "Book," or "Get guidelines" shouldn't be buried behind layers of faucets that make the consumer lose self assurance.

One aspect that recurrently makes a change for corporations in Southend is how swiftly clients can contact you. If you have a telephone variety, make it seen and tappable. If you will have a style, retailer it short. If you rely upon enquiries, in the reduction of the cognitive load on the purchaser. Mobile-first sites make these offerings early, due to the fact they are not able to place confidence in the larger reveal to bail them out.

Here is a useful judgement I use: if a targeted visitor can tap the most important call to movement inside about a seconds and with minimum scrolling, the navigation is doing its job. If they have got to hunt, your design is requesting too much attempt.

A brief sanity check you might do today

If you could have access to your possess website, open it in your cellphone and try to complete one activity, like searching commencing hours or contacting the team. Don't simply skim, surely act like a targeted visitor.

- Can you attain the key call to action with one thumb faucet?
- Do headings and buttons stay readable with no zooming?
- Does the web page stay solid at the same time as snap shots and sections load?
- If you call or publish a sort, does it work first time?

This pastime will customarily reveal extra than any layout review ever might.

Layout choices that experience "small" yet count a lot

Mobile-first design is full of tiny offerings that add up. Things like spacing, font sizing, and hierarchy. Things like no matter if your "featured features" playing cards compete with both other or e-book the person.

For example, on mobile it can be well-liked to take advantage of card-centered layouts for services and products, merchandise, or areas. Cards should be would be could very well be positive, however in simple terms if they're no longer too dense. When cards are too tight, customers turn out scrolling continually, wasting track of where they all started and what every merchandise surely delivers. A cellphone-first website basically makes use of fewer, clearer techniques at the exact, then expands as mandatory.

Another normal limitation is typography. If the font is technically "responsive" yet nonetheless too small, humans will zoom. Zooming creates a brand new structure, and in some cases it breaks the entirety you suggestion used to be fine. Mobile-first layout avoids that seize by means of treating legibility as a center requirement, no longer a layout selection.

Finally, there's the question of content length. A cellphone-first web page does now not automatically suggest "shorter pages." It means your content is dependent so it will be scanned soon. Use headings, get a

divorce dense paragraphs, and make certain every segment has a aim. A targeted visitor on a telephone will mainly skim first and dedicate moment.

Accessibility and cellular: the overlap is real

Accessibility is mostly talked about as a compliance box, however mobile-first layout makes it realistic. Many accessibility issues are extra great on phones: low distinction, tiny tap ambitions, textual content that wraps awkwardly, kinds that are exhausting to finish with a thumb.

If your web page helps keyboard navigation on computing device, fabulous. On telephone you continue to want to think about attention states and the way clients circulation by using content material. You additionally favor to stay away from color-merely cues, seeing that many customers work together with instruments in brilliant outside light or have shade conception adjustments.

A mobile-first frame of mind encourages you to construct for a broader fluctuate of conditions, no longer just a unmarried "top" viewing situation. That tends to enhance person knowledge for all and sundry, adding older users who are a growing number of telephone-first themselves.

Local purpose: why mobile-first helps Southend customers

When other people search whereas they may be out, they usually use regional motive. They may possibly seek for "plumber close to me," "hairdresser open now," or "buy tickets for..." Mobile-first design supports those moments on account that the user's next step is on the spot and location-founded.

You can have astounding search engine optimization, however if the phone enjoy fails, the user does not stay lengthy ample to transform. Mobile-first design improves the trail from seek to movement.

A properly-designed mobilephone website online also makes it less difficult to give useful neighborhood awareness: provider spaces, parking notes, go back and forth occasions, and make contact with important points. These are the types of small print that prevent employees from second guessing you.

If you serve Southend and surrounding areas, you'll be able to by and large discover that customers would like readability instant. They desire to recognise for those who in point of fact quilt their postcode, while you are able to attend, and the way they touch you. Mobile-first pages manage that by means of prioritising the facts users are seeking for underneath stress.

Forms, bookings, and the hidden can charge of extra steps

If your company depends on enquiries, bookings, or lead forms, telephone-first design is the big difference between "we get visitors" and "we get patrons."

On telephones, forms are where optimism goes to die. Too many fields, doubtful labels, or errors messages that seem to be after a person hits submit all end in drop-off. Even a style that looks wonderful on desktop can sense painful on phone if the design is simply too tight or the input varieties are mistaken.

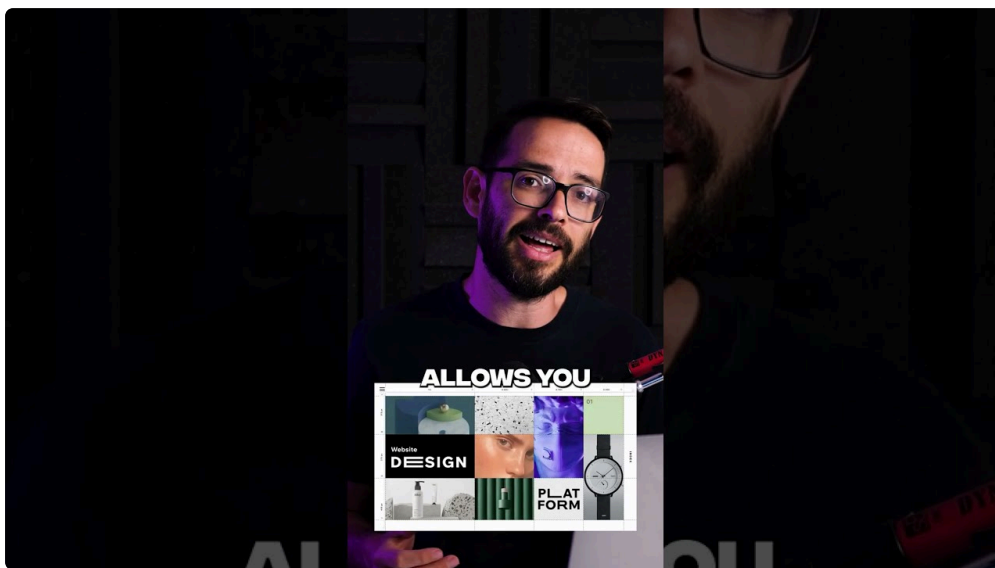
A cellular-first procedure tends to encourage terrific variety design behavior early. You pick out input sorts like tel and email, you store fields minimal, and you design blunders comments it really is correctly useful. You also keep in mind what takes place after the submission. Confirmation messages may still be transparent, swift, and reassuring.

One lifelike detail I actually have learned the exhausting way: in case your sort is lengthy, humans will start out it and abandon it while a specific thing interrupts them. That interruption can be a distracted child, a mobilephone name, or a sign drop. Mobile-first layout makes it less difficult for customers to finish the activity after they have the time and patience.

Content hierarchy: fewer possible choices at the top

A pc website online can have enough money a broad hero part with several competing messages because clients have more house to test. On phone, the "above the fold" sector is smaller and demand is bigger. Visitors wish solutions now.

Mobile-first layout makes you to decide what topics most for your target audience. Usually it is simply not the whole lot quickly. It is your main provider or supply, a brief proof element, and the handiest course to touch.



For Southend corporations, the facts level may appear as if a carrier spotlight, a area reference, or a immediate credibility sign. It should be testimonials, years of journey, or a short "how we work" commentary. The key is that it necessities to be readable and credible within a couple of seconds on a mobilephone.

After that, the page can spread. A mobile-first website online most commonly uses a clear progression: consider what you do, see examples or capabilities, learn how it really works, then contact or publication. That move feels usual because it suits how laborers determine on phone.

What can go mistaken if you "just make it responsive"

Responsive design is priceless, however it shouldn't be kind of like cell-first.

A responsive web page may well cut back down neatly, yet nonetheless shop the identical computer structure logic. That can lead to some frequent concerns: outsized images that down load slowly, navigation that becomes a cramped menu, and content sections that stack in a way that makes the page feel repetitive or confusing.

Mobile-first forces you to ask numerous questions for the period of layout. Instead of "how will this appearance on a smaller reveal," you ask "can a person accomplish the task correctly on a cell."

Here are about a pitfalls I see aas a rule whilst groups deal with responsiveness as the end line:

- Desktop-first layouts that create awkward faucet aims and long scroll traps
- Heavy hero sections that lengthen the content employees essentially came for
- Pop-up states that take over the display, making the website feel hostile on mobile
- Forms which might be too lengthy or doubtful, inflicting avoidable drop-off

Avoiding these considerations is in which telephone-first in point of fact earns its retailer.

Device checking out: more than one mobilephone, a couple of network

Testing is in which cellphone-first will become proper. If you simply payment your website on one machine with important Wi-Fi, you will definitely miss the ordinary experience your consumers have.

I are trying to test at the least across two display screen sizes, and on more than one community profile if available. Even in the event you do not have right lab stipulations, that you could approximate them by means of simply by your phone's telephone data and then checking in varied lighting and sign instances.

The "seafront drawback" is a proper trend, not considering the fact that the design is cursed, but due to the fact that reception is usually inconsistent in constituents of the aspect. That approach the user might be managing slow quite a bit and intermittent connection. Mobile-first design ought to behave gracefully underneath these circumstances, above all for pages that other people seek advice from for instant solutions.

Also check interactions, no longer just static structure. Tap menus. Submit kinds. Try the decision button. Close and reopen overlays. If your website online wishes a user gesture and it triggers an unexpected layout shift, mobilephone-first layout ambitions to keep that roughly frustration.

The role of your online page platform and content workflow

Mobile-first layout is not really simply about the front-give up format. It additionally depends on how your web site is constructed and how your content is managed.



If you operate a CMS, factor in even if editors can create pages that stick with phone-friendly patterns. If templates are inconsistent, new content material may well wreck the cellphone enjoy through the years. That is extraordinarily prevalent when distinctive other folks replace pages devoid of a mighty set of "permitted" styles.

A outstanding telephone-first build assuredly [Web Design Southend](#) carries:

- regular web page templates for carrier, vicinity, and content material pages
- formula that behave nicely on totally different display screen sizes
- styles that retailer typography and spacing regular as pages expand

The most advantageous approaches also make it user-friendly to maintain pages up-to-date, in view that cell-first functionality can degrade while historical photographs are uploaded at monumental sizes or when scripts acquire. In exercise, ongoing care matters as a great deal as the initial build.

If you are planning a remodel, ponder renovation, not simply release day. A mobile-first way should always incorporate a workflow that allows you remain mobile-friendly as your website grows.

How to settle upon a Mobile-First Web Design Southend partner

If you're hiring, you prefer any person who treats mobilephone-first as a complete consumer adventure, now not a rapid styling cross.

Ask how they system navigation, content hierarchy, and overall performance. Ask what they verify for earlier launch. Ask how they tackle images and how they organize kind UX. If they speak most effective about "hunting exceptional," you can in all likelihood get a prettier edition of a site that still leaks leads.

The most powerful partners also talk about business-offs. For example, you may prefer a wealthy homepage with much of visuals, however if those visuals gradual down the page, the phone event suffers. A precise designer will handbook that conversation in the direction of what helps your goals, now not what in basic terms impresses at a design review.

Finally, seek proof of their system. Do they bring designs that take into accounts thumb succeed in, readable category, and conversion paths? Do they map key consumer trips? Do they attempt on numerous gadgets? Those indications are greater good than buzzwords.

Budget certainty: in which phone-first saves dollars, and in which it costs more

Mobile-first can keep fee because it by and large simplifies layouts and prioritises the appropriate sections. When you design from the smallest reveal, you have a tendency to reduce litter. You lower the need for challenging personal computer-only traits that later turn into messy on cellphone.

But phone-first can price more prematurely whenever you desire a serious rebuild, peculiarly in case your cutting-edge web page is developed on older patterns or a framework that does not beef up smooth performance targets without problems. It also can charge extra when you have quite a bit of present content that wants reorganising for phone scanning.

In my event, the fine method to cope with price range is to concentrate on what impacts effects. If your leading intention is enquiries and bookings, prioritize the pages and paths that power the ones actions: service pages, touch, reserving, and key landing pages. You can nevertheless make broader enhancements, but you get the most important return by means of solving what customers work together with first.

Also, take into account that that phone-first will never be one mounted deliverable. It is an procedure that continues after launch by functionality monitoring and content material care.

Practical subsequent steps whenever you are planning a redesign

If you're making an allowance for a refresh of your site, you do not need to overhaul the whole lot right away. Start with the aid of picking the friction facets that rely so much in your purchasers.

Look at your analytics when you've got them. Check in which workers land, wherein they drop off, and what contraptions dominate your visitors. If phone site visitors is excessive, and cellphone conversion is low, you've a clue. Even devoid of suitable numbers, one can almost always see the sample through manually checking out key trips.

Then prioritise improvements that shrink attempt for the person. That in general capacity clearer navigation, swifter loading, enhanced readability, and smoother paperwork and calls to motion.

If you prefer, you can actually even take your latest pages and remodel them with mobilephone hierarchy in brain, in the past committing to a full redecorate. Sometimes a tighter layout, corrected typography, and cleaned-up overall performance can exceedingly give a boost to effects without rewriting all the pieces.

Mobile-first layout is one of these disciplines wherein small advancements add up. A few seconds swifter load time, a less demanding menu, and a sort that is the truth is hassle-free to finish can develop into how your web page feels, and patrons respond to that shift right away.

Why it things, really

Mobile-first information superhighway layout issues because it respects how worker's behave. In Southend, that behaviour is prompt and energetic. People seek for answers in motion, on telephones held in a single hand, and that they determine briefly whether or not a business feels official.

A cell-first website online makes your commercial more straightforward to decide. It supports purchasers to find what they desire with out attempt, it turns contact into a one-tap action, and it reduces the tiny frustrations that motive americans to bounce.

If you're investing in Web Design Southend, deal with it as an event you are constructing for the software your purchasers truthfully use. When you do, your web page stops being a static brochure and begins appearing like a constructive native service.