

When persons in Essex dialogue about “fuel safe practices”, they in general imply the obvious stuff first. A flame that looks true, a boiler that fires up on demand, a cooker that ignites devoid of fuss. But carbon monoxide, more often than not shortened to CO, doesn’t care how tidy your kitchen appears or how risk-free your boiler sounds. It’s invisible, odourless, and truthfully unforgiving. That’s why a exact Gas Safety Check Essex inspection is simply not a box-ticking pastime, it’s a probability evaluation you’ll experience to your bones.

Over the years, I even have seen how CO trouble can get started quietly, then boost quickly as soon as anything shifts. A flue that has sagged slightly, a condensate pipe connection that’s long past a piece wrong, a vent that’s been blocked with the aid of an overenthusiastic DIY “restoration”. Sometimes the challenge is instantaneous. Other occasions it’s a gradual float that simplest turns into transparent when anybody tests the right matters inside the excellent order, the usage of calibrated gadgets.

Let’s walk by what a carbon monoxide menace verify without a doubt looks for, why it concerns in authentic residences and firms throughout Essex, and what one could do to in the reduction of the percentages of a damaging fault.

Carbon monoxide: why “it appears to be like first-class” shall be the so much unhealthy phrase

Carbon monoxide is produced whilst gasoline burns incompletely. The widely used suspects are matters that have an impact on combustion and air flow: confined flues, broken burners, flawed rigidity, blocked air promises, or concerns with the heat exchanger and seals. In a fit setup, combustion produces carbon dioxide and water vapour, with the flue carrying the through-products safely outside.

If combustion is going off stability, CO could be existing inside the mistaken place. The provoking edge is that indicators might be imprecise and common to misread. People in certain cases describe complications, dizziness, nausea, or that “flu-like” feeling that improves once they step outdoors. The threat is compounded if all people inside the domestic believes the scent, taste, and seen flame tell the complete story. CO might be there devoid of drama.



I take into account attending a belongings wherein the boiler had been serviced these days, however the occupants had started out noticing light headaches after evenings in. The boiler ran generally such a lot of

the time. The difficulty came all the way down to a flue termination that had been in part obstructed with the aid of anything backyard the constructing, in all likelihood over time from climate and particles. It was no longer a "grand breakdown" second. It changed into a small alternate that mattered.

That's the process of a Gas safety certificate Essex inspection for landlords and the cautious, purposeful tests a home owner could prefer even with tenure.

What a Gas Safety Check as a matter of fact tests (and what it doesn't)

A carbon monoxide menace comparison shouldn't be only about interpreting more than a few on a display. A exceptional inspection blends measurement with judgment. Instruments tell you what is occurring at that second, however well technicians also look for why it's taking place, or why it may happen later.

For boilers and fuel appliances, technicians usually overview combustion performance by using checking:

- flue fuel evaluation, routinely along with CO ranges and effectivity indicators
- flue draught and combustion conditions
- burner operation and ignition behaviour
- gasline pressures where relevant
- air flow preparations and air supply
- the integrity of seals and seals around combustion chambers

For gas fires and identical home equipment, the exams characteristically awareness on right burner overall performance, air give, and safe flueing. For appliance varieties which can be room-sealed as opposed to open-flue, the danger profile is special, however the theory remains the same: any scenario that disrupts perfect venting can create CO danger.

A key element, exceedingly when humans have had contemporary work executed, is that a Boiler provider Essex go to should still now not be taken care of as a loose circulate. Servicing facilitates, however the properly quite service consists of combustion tests, not just cleansing. A boiler may well consider "warm and effective" even though still exhibiting an quandary within the combustion readings.

Also, CO chance is now and again tied to set up high quality. That's in which Boiler Installation Essex workmanship matters, not in view that of us need perfection, however considering that alignment, pipe runs, clearances, and perfect flue configuration quickly influence combustion and venting.

If you're planning an upgrade, a Gas Fire Installation Essex or Gas Cooker Installation Essex job deserve to come with fantastic siting and safe routing. Even a minor routing difference can have an affect on air stream and stress balance.

The such a lot familiar carbon monoxide hazard paths in houses throughout Essex

In Essex, you'll discover a blend of older housing inventory, transformed properties, and newer builds, plus all of the diversity that comes with living on the subject of coast, historical streets, and changing weather patterns. The CO dangers I see have a tendency to cluster round about a subject matters.

1) Flues and ventilation being "pretty much" right

The flue is the place safeguard occurs such a lot of the time. If exhaust items do no longer journey good out of doors, CO hazard rises. Problems are as a rule diffused.

A small gap round a joint can enable combustion merchandise to come back into the estate. A flue run that has been altered, boxed in poorly, or has a mild slope the inaccurate manner can lure condensates or restriction drift. Outside terminations can get blocked by way of leaves, debris, or maybe nesting constituents. Sometimes a wall or soffit place will get transformed, and no one relates that work to flue efficiency.

Then there's the air flow edge. Even in the event that your boiler is room-sealed, a few appliances and cases rely on enough air give. If a vent has been coated for draught reasons, or a room has been sealed up tighter than meant after renovations, combustion air can was limited.

2) Burner and warmth exchanger wear

Combustion programs degrade with use. That wear can suggest choppy flame patterns, bad ignition, and ameliorations in how the appliance burns gas. A blocked burner, a damaged issue, or an predicament inside the warmth exchanger can change combustion caliber.

This is why Boiler Repair Essex fixes need to be done appropriately instead of patched. "It fires up back" does not assurance it burns cleanly. In the worst cases, a fix that doesn't handle underlying combustion themes can create an ongoing CO risk.

3) Gas power and mistaken settings after work

Any time materials are replaced, or a process is adjusted, fuel force and combustion settings must always be confirmed. I actually have obvious instances wherein folk assumed that due to the fact the equipment was "running", it have to be set properly. In reality, if the strain is off or the settings are usually not aligned with the equipment spec, combustion can substitute.

This is in particular critical after appliance transformations, or where DIY or non-specialist paintings has occurred. It's also crucial while a dwelling has had numerous trades out and in, with ventilation adjustments that had been not at all coordinated.

four) Condensate and drainage trouble affecting flue performance

Modern condensing boilers place confidence in condensate drainage. If the condensate course is blocked, frozen, or incorrectly linked, it's going to in some way have an impact on equipment operation. Some faults don't seem like evident "no heat" difficulties at the start. They educate up as recurring shutdowns, unfamiliar noises, or intermittent efficiency.

While condensate troubles are by and large discussed in terms of boiler breakdown Essex frustrations, the underlying consequence on trustworthy operation is worthy taking significantly. If the equipment isn't behaving as intended, combustion and venting efficiency needs to be checked.

5) Non-preferred fuels and switched over systems

For LPG Essex houses and residences, the stakes are comparable, but the setup is numerous. LPG approaches require ultimate configuration for the fuel classification, and any conversion wishes real checks and verification. A conversion finished poorly can create combustion troubles that simply convey up beneath specified working stipulations.

If you've gotten any LPG conversion historical past, it's clever to treat CO possibility exams as a concern, no longer a regimen afterthought.

6) Not just buildings, additionally companies and industrial kitchens

Carbon monoxide risks convey up in industry settings too. A Burger van gasoline Essex setup, to illustrate, would possibly seem "fundamental" because it's phone and also you're centered on velocity, however the setting continues to be unforgiving. Poorly maintained machine, improper pipework, or inadequate ventilation can all carry CO danger.

Similarly, commercial websites with a number of gas home equipment desire coordination. One equipment working poorly can have an impact on universal air flow and stress behaviour in a shared house.

Why employees regularly miss CO menace for the duration of a "boiler breakdown"

When a Boiler breakdown Essex calls happens, the first intention is most often to restore warmth. That's understandable. Nobody desires a chilly estate. But the emergency attitude can lead human beings to accept an consequence without verifying combustion safeguard.

A secure reaction consists of either. You repair the fast fault, then you be certain secure operation by way of combustion checks where best. That's how you ward off the situation wherein an appliance is restarted however nevertheless not burning because it have to.

In follow, I even have noticeable "breakdown" change into "cycle of indicators". A boiler locks out, gets reset, runs for some time, then locks out lower back. Without combustion and functionality checking, the authentic fault can take a seat in the back of the behaviour, progressively worsening. CO probability is one of these hidden difficulties, enormously if venting performance is affected.

If the boiler has been failing or transformed, deal with a higher service or fix as a protection verification, now not just a functional one.

A true-international view: indicators you should always no longer ignore

CO issues aren't invariably dramatic. Some families note patterns. Others detect indicators that come and pass. Some depend upon the equipment no longer behaving love it used to.

Here are simple signals that warrant speedy attention, even in the event that your gasoline engineer says the appliance "appears all right":

- Symptoms like complications or nausea that ease whilst you depart the belongings, especially all the way through appliance operation
- Any history of soot, staining, or discoloration near flues, vents, or equipment surrounds
- Flue issues, inclusive of visual draft issues, abnormal smells, or moist patches that stay returning
- Persistent ignition issues or recurring lockouts that don't behave like widespread wear
- Anyone within the assets feeling ailing across the similar instances, without an apparent medical cause

If you watched CO threat, get authentic assist urgently. Also, if someone is feeling critically ailing, deal with it as an emergency and stick to nearby training.

How usually should still you have got a Gas security certificate Essex inspection?

For landlords and apartment homes, there may be a criminal requirement for Gas protection certificates Essex. The frequency is by and large annual for the property and home equipment lined by means of the restrictions. That's now not just brought on by documents. It's given that home equipment and environments alternate.

In proprietor-occupied properties, there's no single felony requirement within the similar means, however a sensible technique mirrors the related notion: have it checked characteristically, and constantly after some thing which can influence safe practices.

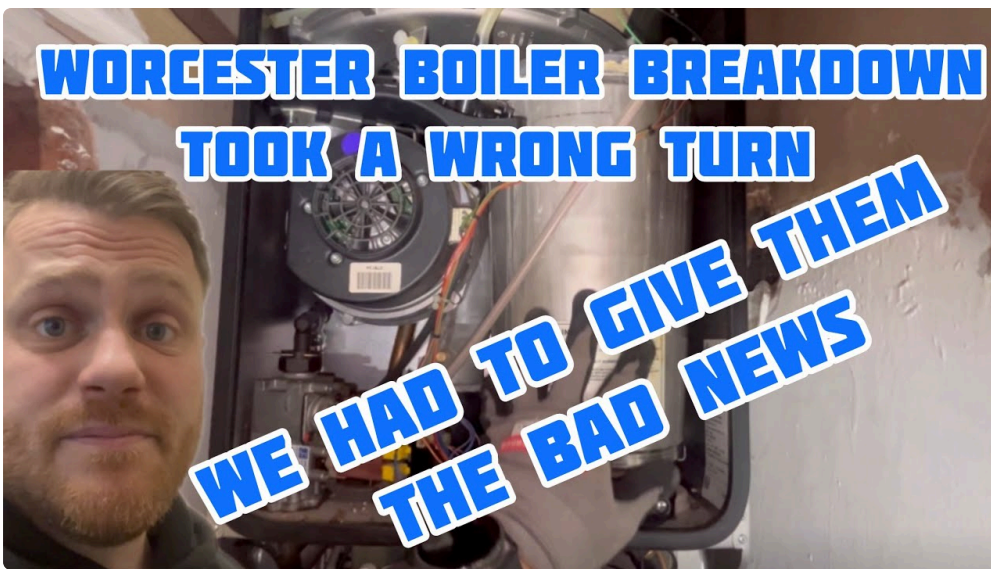
"Anything which may have an affect on protection" includes differences to the appliance, flue ameliorations, building works regional, air flow changes, or subject matters that led to a Boiler fix Essex go to.

Even if everything has been [Boiler Repair Essex](#) serviced, in case you have reason to think a fault came about, the subsequent step is simply not "wait and see". It's checking and verifying nontoxic operation.

What to anticipate on the day of a check

People in most cases ask what a pro does past "having a look round". A just right inspection has a rhythm. You can believe the difference between a rapid look and a actual test.





In an ordinary Gas Safety Check Essex visit for a boiler or fuel fire situation, you should still be expecting:

First, a visible inspection of the appliance and its connections. Flue joints, seals, venting routes, and physical situation are assessed. Then, the engineer checks ventilation inside the room and, wherein central, that the properly air delivery is conceivable.

Next comes trying out and measurement, occasionally such as flue fuel research. For boilers and appropriately configured home equipment, CO readings and other combustion data are checked so the engineer can decide whether the equipment is burning cleanly and venting appropriately.

Finally, there's a trouble-free explanation of what used to be determined, whether some thing is out of specification, and what the advocated subsequent steps are. If ameliorations or upkeep are crucial, the engineer could make certain that the readings improve and that the appliance operates thoroughly under accepted operation.

If individual handiest assessments "does it warmness water" and skips combustion exams, be wary. Function and safety aren't equal.

Choosing the appropriate guide in Essex, now not just any "gasoline fitter"

Essex has masses of tradespeople. The situation is picking the properly one for the job you actually have.

If your widespread desire is an annual inspection, look for sense with equipment varieties you may have. If you want a Boiler service Essex, determine that the provider incorporates combustion exams wherein fabulous. For installation work, you favor recognition to routing, clearances, flue configuration, and splendid commissioning, no longer just pipework that fits.

For gas fireplace situations, Gas Fire Service Essex visits ought to address burner cleanliness, ignition, and ventilation issues. For setting up work like Gas Fire Installation Essex, Gas Cooker Installation Essex, or Gas equipment fitting after %%!%%2782147c-third-4a48-9d65-4ad6c4df025d%%!%%, commissioning tests topic. A cooker setting up is simply not merely about getting the appropriate flame trend. It's about reliable connections and safe operation inside the house.

If you're dealing with LPG Essex properties, make certain the engineer understands LPG configurations and verification wants.

For procedures which can be giving move concerns otherwise you're getting ready the heating method for superior overall performance, Power Flush Essex is on occasion element of the answer. A Power Flush is simply not a CO protection fix, but it'll prevent same operational subject matters that lead employees to fiddle with settings or ignore faults. Clean, wisely working approaches are more easy to diagnose appropriately.

If you furthermore may have Aircon Essex or Air Conditioning Essex contraptions, there's characteristically a couple of technician in a belongings. These strategies don't create CO, however they exchange airflow styles and can impression ventilation and comfort. If you've got you have got mechanical air flow changes, it's price coordinating with whoever manages fuel home equipment.

And if you happen to run a business with dissimilar gas-powered strategies, advertisement ride issues. A Burger van gas Essex setup consists of authentic-international constraints, but secure pipework, ultimate air flow, and regular checks nevertheless practice.

A brief, functional list you could possibly use among visits

You should not "DIY" a carbon monoxide detector experiment of the equipment combustion course of, yet that you would be able to prevent your self alert to noticeable dangers and take shrewd movements.

Here's a small guidelines that enables you keep grounded:

- Make yes you might have working CO alarms in significant spaces, exceptionally near napping spaces and where you spend time employing gasoline appliances
- Don't disguise or block vents or air bricks, even temporarily
- If you understand soot marks, staining, or ordinary pilot or ignition disorders, publication a money in place of resetting repeatedly
- After any constructing work or variations to ventilation, arrange a gas safe practices inspection
- If signs and symptoms recover whilst you depart the estate, treat that as a extreme warning sign and get the components checked urgently

That closing factor is the one laborers occasionally downplay. Don't.

How to diminish CO probability without obsessing over it

The aim is not really fear. The purpose is manipulate. Carbon monoxide probability falls dramatically whilst 3 things turn up: the equipment is as it should be hooked up, it is maintained with top exams, and the surroundings seriously is not by chance transformed into a hindrance.

Maintenance subjects on the grounds that small changes add up. A Boiler Repair Essex visit could be observed via verification, now not just a "seems o.k." handover. Servicing concerns because it identifies wear and combustion flow. Installation subjects since it sets the baseline, the single the overall formula is dependent on.

Then there's the human aspect. In genuine existence, workers alter vents, block draughts, re-course pipes, or swap kitchen extractor setups. Those changes are most likely made for comfort, not security. The repair is communicate: after any modification that affects ventilation or flueing, get the procedure checked.

If you have got LPG Essex equipment, be equally disciplined. Don't suppose it behaves like ordinary gas appliances. Fuel form affects combustion stipulations.

Edge situations I store in thoughts (on account that they bite)

There are a number of events where judgement topics extra than common manner.

One is mixed appliance environments, fairly the place numerous home equipment percentage the identical house or ventilation features. Sometimes the boiler would possibly read excellent, however one more appliance or a ventilation swap introduces menace. That's why a radical assess appears to be like on the entire photo, now not just one appliance.

Another is poorly documented recent work. If anyone has had a flue altered, or an appliance replaced, however the old records are missing, it's shrewd to treat the formulation as doubtlessly uncertain. In the ones cases, a careful cost and in all likelihood more verification steps can keep later surprises.

A 0.33 side case is when human beings get chilly drafts and reply through sealing rooms tightly. It enables remedy for a long time, unless it doesn't. Gas home equipment want greatest air and venting stipulations. Mechanical consolation transformations can by accident create a combustion imbalance.

Where CO possibility fits with different fuel safety concerns

Carbon monoxide is the headline possibility considering that that is invisible and immediate-appearing in phrases of injury, yet it sits along other safety worries.

Gas leaks are nonetheless a probability. Correct drive and defend connections depend. Combustion performance is tied to riskless venting, which is tied to flue integrity. That's why a comprehensive Gas Safety Check Essex talk over with covers more than simply CO readings.

If you've had a Boiler Installation Essex assignment recently, the commissioning procedure ought to tackle trustworthy operation and relevant functionality. If you could have Gas Cooker Installation Essex paintings, dependable connections and greatest siting rely. If you've got Gas Fire Installation Essex or Gas Fire Service Essex paintings, secure combustion and trustworthy operation needs to be a part of the deliverable.

People repeatedly treat each and every equipment as separate, but the method is the whole atmosphere.

What about CO alarms and detectors?

CO alarms are a essential layer, yet they do not change authentic tests. A CO alarm is there for the moments whilst some thing has long gone mistaken and CO accumulates. It's a backup, not a diagnosis software.

If your alarm goes off, act critically. Ventilate if safe to accomplish that and speak to properly aid on the spot. Then, as soon as cleared, inspect the equipment and flue overall performance. The alarm did its job. The next step is solving the purpose.

I as a rule indicate that property owners treat CO alarms the way they treat smoke alarms. You wouldn't ignore a smoke alarm, and you shouldn't forget about a CO alarm both.

Boiler service, restoration, set up, and protection exams: how they connect

A boiler isn't always only a heating unit, it's a combustion equipment with a flueing formula. That's why the strains between Boiler provider Essex, Boiler fix Essex, and Boiler installing Essex don't seem to be as separate as employees consider.

A incredible service supports evade flow into bad combustion. A sensible restore addresses faults without creating new ones. A good deploy sets up true venting and reliable baseline operation.

In my journey, the very best outcomes appear when the comparable simple of verification is carried out at each one degree. If a equipment was installed cautiously, it needs much less "trap-up" protection. If it changed into mounted poorly, it will probably not ever feel reliable, and safeguard dangers can grow to be constituents age.

That's the place selecting a ready professional matters.

Final innovations: protection is a dependancy, not a one-off

A Gas Safety Check Essex visit is easy to treat like a ordinary task, yet it's in reality a moment of menace manage. It's the time when invisible trouble turned into seen inside the form of readings, proof of excellent operation, and recommended choices about upkeep or alterations.

If you want to scale back carbon monoxide possibility on your Essex homestead or business, prioritise three practical conduct: get the good checks performed at smart durations, reply at once to any indications or symptoms, and do no longer settle for "it fires up" rather for verified safe operation.

Gas safe practices is one of those parts wherein calm, official thoroughness beats guesswork at any time when.

If you'd like, tell me what kind of home equipment you will have in your home, boiler age (kind of), and regardless of whether it's normal gasoline or LPG, and I can imply what to concentrate on at some stage in your subsequent Gas protection certificate Essex or servicing appointment.