

A gas safety check at various points is one of these jobs that sounds functional except you sit down and watch it show up wisely. Then you recognize it is not simply “flip up, examine a bit of, signal a style”. It is a cautious, methodical manner that looks for protection negative aspects, tests how appliances are burning, and verifies that the entire process is running as it should still. Done well, additionally it is one of the fastest approaches to identify troubles early, in the past they change into a boiler breakdown or a extra costly boiler restore.

If you are anticipating a stopover at from a gas engineer, or you're booking one, it is helping to know what really takes place all the way through the visit and why each one step things.

## **The first factor the engineer does: make feel of your setup**

When I arrive, the first short while are ordinarily about context. Is this a [Boiler Service Essex](#) home with a combination boiler and a gas hob? A flat with a gas hearth and a to come back boiler? A belongings with LPG cylinders feeding more than one home equipment? Or whatever thing individual like a burger van gas device in which the pipework, isolation valves, and air flow get handled like a numerous world?

A gas safety cost routinely covers the fuel appliances and pipework within the belongings. That capacity the engineer wants to recognize what's hooked up, in which it runs, and the way this is managed. If you've gotten had contemporary plumbing work, an appliance circulate, or a difference to an airing cupboard, the engineer will choose to understand. Small modifications can affect combustion air, ventilation, and how gases waft as a result of the system.

You do not ought to comprehend the technical details. But lifelike data assistance, like:

- When the appliances were put in, while you know
- Whether whatever smells distinguished (even in short)
- Any contemporary “quirks” like pilot lights that behave surprisingly or ignition delays

From there, the engineer will ask for entry where considered necessary, and they can clarify what they're going to match ahead of they bounce pulling panels off and taking readings.

## **Checking the visible security goods (until now tools come out)**

Before any deep checking out, the engineer will examine the fundamentals. This is where a number of authentic-world hazard can show up immediately. Gas safeguard will never be basically approximately combustion and meters, it also includes approximately bodily condition: pipework that has been broken, fittings that seem wrong, and venting which is blocked or missing.

If you could have a boiler service or boiler install that is reasonably new, the “noticeable” facet nonetheless issues. Even new installs will have topics if a specific thing has been altered, a cupboard has been modified, or protection acquired ignored. Older platforms can have the other worry, all the pieces seems okay except you experiment it.

During the visible tests, you possibly can pay attention the engineer talk approximately:

- Isolation valves and no matter if they are available and in remarkable condition
- Gas pipe runs and joints, awfully round appliances
- Ventilation openings, consisting of grilles and air vents
- Any signs and symptoms of corrosion or previous repairs

There is an explanation why this concerns even when the entirety else is first-class. Gas protection examine paintings quite often catches hidden faults simply if the engineer is already inquisitive about wherein the hazard may live.

## **The middle combustion examine: how the appliance is burning**

Once the engineer has inspected the lifelike safety ingredients, they flow into the coronary heart of the activity: combustion functionality.

For home equipment that burn fuel, the key's that combustion may still be sturdy and total. If combustion is off, it's going to produce hazardous items, and the equipment can soot up, smell, or behave unevenly. In a worst-case scenario, unsuitable burning can result in carbon monoxide hazard, flue gasoline subject matters, and harmful operation.

That is the place check gadgets are available in. Depending at the equipment fashion, the engineer will degree things like flue gas conditions and verify the air-gasoline combination. You would possibly see the engineer connect probes to the correct attempt aspects, continually with care to evade leaving any holes or mis-seating formula.

If you've a gasoline fire, it really is in which Gas Fire Service comes into play in genuine terms. Even if the test is portion of a much wider Gas Safety Check visit, the combustion checking out is the similar field: this is approximately how safely that fireplace is burning at the present time, not what it used to be like while it became first commissioned.

If you will have a boiler, the engineer is taking note of the two the burner behaviour and the full overall performance of the boiler as a system. The "boiler breakdown" you pay attention approximately online is rarely random. It is almost always hooked up to how the boiler is burning and no matter if the gasoline controls, fans, and ignition technique are behaving inside of original parameters.

## **Flues, ventilation, and the "it appears to be like best" trap**

A lot of issues usually are not dramatic. They are simply quite wrong. Maybe the flue terminal were given blocked via particles, or an exterior vent became lowered right through window replacement. Maybe an interior cupboard now holds paint cans, or individual pushed insulation too near a vent. Ventilation is usually something workers fail to remember since it is absolutely not noticeable on a every single day groundwork.

The engineer will payment the flue path and determine it is effectively linked and not blocked or compromised. For open flue and room-sealed appliances, the tests concentrate on how the machine is drawing air and the way waste gases are discharged.

If you have got something regarding Aircon or Air Conditioning, it truly is worthy pointing out if you have equipped a unit that modifications rigidity inside the room. I even have viewed eventualities wherein a home has more than one units strolling, windows remain close for lengthy intervals, and the room can became too pressurised or too sealed for nontoxic equipment operation. An engineer will now not continuously "blame" air conditioning, but they'll treat the general setting as component of safety.

On LPG strategies, the possibility profile is similar however the main points depend. LPG behaves otherwise from healthy gasoline, and vapour offer and legislation desire to be fabulous. An LPG setup would possibly incorporate exclusive regulate apparatus, cylinder arrangements, and specific expectations round pipework and tests. The engineer's activity is to ensure that is riskless for how your specified device is actually working.

# Pressure assessments and leak detection (the side many men and women underestimate)

After combustion exams, the next big category is leak detection and approach integrity.

Gas Safety Check paintings incessantly involves checking out for tightness of pipework and connections. The engineer might use gadgets to confirm there may be no leakage at joints, manifolds, and connections to appliances. Sometimes there is also a rigidity examine, based on the setup and the ideas being applied for that talk over with.

This is in which which you can in a timely fashion see why a specialist technique topics. It seriously isn't near to "do I odor gasoline". Gas can leak with no a considerable scent for a era, and a small leak can still be harmful. Conversely, smells can come from different sources, so the engineer needs to uncover the lead to in preference to bet.

If you've got ever had a Burger van gas arrangement, the expectancies round pipework and isolation are even greater strict considering the fact that the device is theme to circulate, transport, vibration, and authentic utilization circumstances. In the ones occasions, the engineer's inspection approach is tuned to how faults may want to strengthen beneath tension.

## What the engineer primarily verifies throughout the time of a fuel safety check

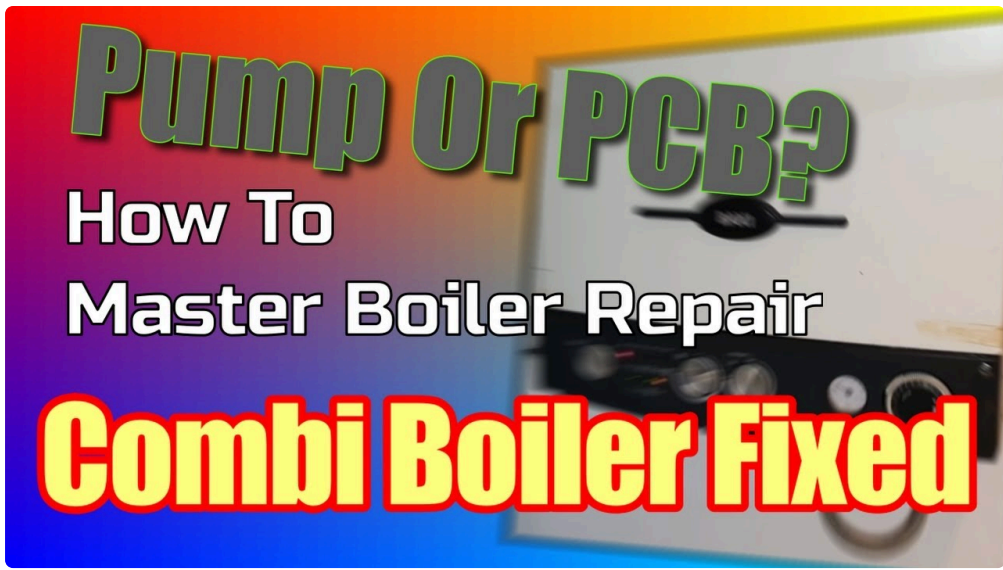
Here is the series most house owners know, in plain language. Exact steps fluctuate via appliance classification and assets conditions, however the priorities live constant.

1. **Identify every related fuel appliance** protected inside the cost and be sure what gasoline supply is used (herbal fuel or LPG)
2. **Inspect pipework, valves, and seen connections** for ruin, incorrect fittings, or signs of tampering
3. **Check air flow and flue components** so waste gases discharge appropriately and combustion air is sufficient
4. **Test combustion performance** due to gorgeous devices to be certain safe operation
5. **Record results and whole the Gas protection certificate** wherein required

If you might be in a rental concern, that paperwork concerns because it demonstrates compliance. Even for owner-occupied buildings, having clean history is helping you song alterations. It may guide warranties for home equipment, highly if you booked the suitable quite Boiler Service or had a contemporary Gas Cooker Installation.

## Gas cooker and other home equipment: the cost remains to be equipment-by means of-appliance

It is easy to consciousness on boilers and forget the relaxation of the device. A lot of houses have a fuel cooker, and in many instances there's additionally a gasoline hob, an oven, or additional appliances that run at the related provide.



During the assess, the engineer will verify that the cooker ignites actually, burns correctly, and is nontoxic for use. The combustion styles tell a story. If the flame looks unsuitable, the engineer investigates why. Sometimes it's far a regulator subject, now and again it's far burner head cleanliness, and from time to time it truly is anything extra in touch like ventilation troubles in the room.

If you latterly had Gas Cooker Installation, the engineer will nonetheless payment how it's far burning this present day. A neat install is only the commence. Gas appliances swap performance a bit as burners get grimy and as the house's air flow conduct shift over the seasons.

**Boiler checks are extra than "does it easy"**

Boilers are usually defined as legit, unless they are not. A boiler breakdown can believe random, but an amazing engineer will deal with it like a pattern. Even on a pursuits Gas Safety Check, they seek warning signals: peculiar noises, volatile burner behaviour, poor formulation response, and signals of ongoing combustion or venting complications.



If your private home has had a latest Boiler Repair, it truly is pretty tremendous that the engineer verifies efficiency as part of safeguard. Repairs can address one difficulty at the same time an alternate underlying component remains existing, like imbalance within the components or ordinary air or particles problems.

A swift observe on Power Flush: it is not very anything that robotically happens all through a safe practices check. Power flushing could be a deliberate step while the approach has sludge, lowered flow, or ordinary heat distribution complications. But the relationship is real. If a boiler has now not been maintained nicely and the formula movement is deficient, you'll be able to find yourself with indications that affect performance and luxury. It isn't really a direct safety-certificate substitution, however it's miles component to how boiler wellbeing is controlled inside the real world.

## **Gas fireplace defense exams: consolation relies on nontoxic combustion**

Gas fires can appearance easy, but they may be touchy to air source and flue situations. A Gas Fire Installation achieved accurately still wants periodic assessments for the reason that family unit conduct change. Chimneys get swept or no longer, vents get blocked by using decor, and many times furnishings finally ends up nearer than it deserve to.

During a fuel defense investigate, the engineer will investigate trustworthy operation, burner condition, and how the fireplace performs lower than load. You may realize that a fuel hearth feels "high-quality" but still has combustion issues that in simple terms educate up in examine readings. That is why counting on remedy alone is just not adequate.

If you're reserving Gas Fire Service as a separate appointment, it oftentimes overlaps with the safety-test mindset. The big difference is scope and timing. A dedicated service may encompass extra cleansing, materials checks, and extra in-depth paintings. A safe practices inspect specializes in security-integral efficiency and integrity.

## **Rooms, cupboards, and "the place the hidden pipework lives"**

In many houses, the gas pipework runs via puts which might be basic to ignore. Under stairs, in the back of kitchen units, in airing cupboards, and sometimes in spaces which have been repurposed. If you have got performed renovations or modified the design, the engineer can even need to open panels or take away entry covers.

That can think invasive if you have no longer had person in sooner than. Still, it really is a security aspect, no longer a curiosity difficulty. If a thing goes to be checked, it need to be checked wisely, certainly the place pipework connects to home equipment.

If the property has geared up shelves round a boiler, as an example, the engineer may well ask you to be sure that there may be ample get admission to clearance. The engineer's aim is to keep protection strategies reachable when also no longer hazardous what you have paid for.

## **Paperwork, Gas security certificates, and what it should always imply to you**

Once the engineer finishes testing, they collate the results. For a commonly used Gas Safety Check, you needs to obtain a Gas safeguard certificates in which required, with information of the home equipment checked, effects, and any instructions or faults came across.

A marvelous engineer may also talk any remedial work it really is essential, whether or not it's minor. "Minor" in gasoline protection can nonetheless suggest it is valued at addressing before it turns into pressing. You

might get information approximately cleaning, air flow transformations, or arranging Boiler Service, Gas Fire Service, or Gas Cooker Installation apply-america

It is value asking questions if whatever thing is doubtful. If the engineer says an equipment wishes interest, ask what a better step is and regardless of whether it impacts everyday use. Sometimes the answer is simple, a area substitute or an adjustment. Sometimes it's far a more fascinated restore.

## What happens if the engineer reveals a fault

This is the component many men and women concern, but it really is more beneficial to know sooner. If anything is risky or not assembly appropriate criteria, the engineer will no longer without a doubt "hope it fixes itself".

The secret is judgement and protection precedence. Depending at the kind of fault, the engineer would possibly propose which you do now not use an appliance until eventually repairs are achieved. They will oftentimes provide an explanation for the menace in simple phrases and what necessities doing.

In proper loved ones schedules, that implies you may want to organise Boiler Repair, a flue or ventilation correction, or a more prevalent formulation fix. Sometimes a fault facets towards earlier poor renovation. Sometimes it's far brought on by a latest amendment to the assets, like a door being outfitted another way, a vent being blocked, or an equipment being moved.

If you are facing LPG, fault patterns can comprise worries around regulators, cylinder arrangements, or air flow regarding the designated deploy. The repair remains life like, however the lead to may be alternative from average gasoline setups.

## The commerce-offs: velocity versus thoroughness

Homeowners continuously need the stopover at to be swift. A fuel protection check should be would be could very well be powerfuble, but speeding is how matters get neglected. The authentic question is whether or not the engineer is spending time in the excellent areas.

A rapid visit can come about when all the things is accessible, home equipment are uncomplicated, and air flow and flues are clean. A longer stopover at can turn up when pipework is hidden, flues want inspection get entry to, there are assorted appliances, or the engineer has to retest after resolving a small inconsistency.

I actually have seen visits run longer considering a flue course used to be partially boxed in and needed to be inspected properly. I actually have also viewed lengthy visits on the grounds that a components behaved differently for the duration of trying out than it did all through normal use, which is exactly should you prefer the engineer to be patient and thorough.

## Before the engineer arrives: small steps that help

You do not need to do something technical, yet you possibly can make it easier for the engineer to do a excellent process. If you might be getting ready for the discuss with, these practical steps lend a hand.

1. **Ensure access** to the boiler, fuel hearth, and any cabinet housing the gasoline controls
2. **Clear the area** around home equipment so panels and ventilation facets might be inspected
3. **Have the appliance data to hand** should you know them, like setting up dates or prior carrier notes

4. **Let the engineer recognize approximately recent work** resembling plumbing variations, renovations, or an Air Conditioning set up
5. **Be able to talk about smells or efficiency issues** when you have noticed any

If you've got a estate with LPG or a much less widely wide-spread association, mention that prematurely. The engineer can also arrive with the several material, or they can plan easy methods to get right of entry to isolation valves accurately.

## **What to do after the visit**

Once the engineer has issued the Gas safeguard certificates, take it significantly as a document of truthfully performance at that time, no longer as a one-and-performed doc that is going right into a drawer.

If every part surpassed, that you may nevertheless ask when the subsequent look at various deserve to be booked. If ideas have been made, you needs to observe due to. A lot of complications that come to be Boiler Breakdown reviews delivery with "it looked all right for a bit of". The value of waiting is ordinarily larger than the settlement of sorting a small predicament early.

Also, if in case you have appliances that percentage a ventilation surroundings, retain an eye on variations. A new kitchen, a brand new extractor manner, draft-proofing, or an Air Conditioning unit can modify the room atmosphere. Sometimes the equipment nonetheless burns advantageous. Sometimes the margins reduce. A safe practices fee is there to trap that.

## **A few phrases about frequency and responsibility**

The criminal and high-quality-exercise requirements round Gas Safety Check frequency rely upon regardless of whether the belongings is rented, who is liable for compliance, and which rules observe to your discipline. If you might be in doubt, ask your engineer what frequency and forms apply to your issue.

For landlords and dealing with marketers, the Gas security certificate is more than a list, it really is component to your duty of care. For house owners, the value is quieter however factual, a predictable investigate catches trouble early and assists in keeping your private home's gas home equipment working appropriately.

## **When you can desire excess visits past a security check**

A safeguard fee does not replace servicing. It also does now not exchange corrections for set up trouble or maintenance after wear and tear. There are occasions chances are you'll want separate appointments like Boiler Service, Boiler Installation after a alternative, Gas Fire Installation when upgrading a unit, or a committed service for habitual faults.

Sometimes that's as essential as burner cleaning or adjusting materials. Sometimes it factors to equipment concerns that desire recognition, like Power Flush considerations when move and performance are declining. Sometimes, fantastically after plumbing paintings or renovations, it triggers a re-evaluate of ventilation and flue arrangements.

If your trouble incorporates multiple gas appliances, it is straightforward for one to be flawlessly protected whilst a different presentations early signs of issues. Safety tests are appliance-special, so we can display that mismatch.

## The precise aspect of the visit

After about a hours looking the course of, the most popular way I can describe that is this: a gasoline security take a look at is the engineer attempting to end up, with proof, that your gas appliances are working safely and predictably.

That capacity finding beyond the plain, testing how combustion behaves, confirming venting and integrity, and documenting outcome so that you and the proper someone can act on them. Whether that is a boiler, a gas hearth, a gas cooker, an LPG offer, or whatever like a burger van gasoline setup that runs underneath stress and movement, the mindset stays regular.

If you have become geared up for an appointment, the so much beneficial issue that you can do is make get admission to effortless and be straightforward approximately whatever you've gotten noticed. Then allow the engineer do what they're proficient to do, stick to the system, try thoroughly, and let you know the reality of what is going on contained in the appliance as we speak.